

INSTALLATION MANUAL EXCAVATOR KEYLESS START (77700-10659) KUBOTA KX033-4, U35-4, KX040-4, KX057-4, U55-4

CALIFORNIA PROPOSITION 65

⚠ WARNING:

Cancer and reproductive harm - www.P65Warnings.ca.gov

BEFORE INSTALLING EXCAVATOR KEYLESS START

- Read all instructions and safety instructions in this manual.
- Refer to your machine's operator's manual and safety instructions on your machine's safety decals.
- Wear appropriate personal protective equipment (PPE) when performing work.
- Disconnect negative (-) terminal on battery before performing work.
- Hang a "DO NOT OPERATE" tag in operator station.

⚠ WARNING

To avoid personal injury or death:

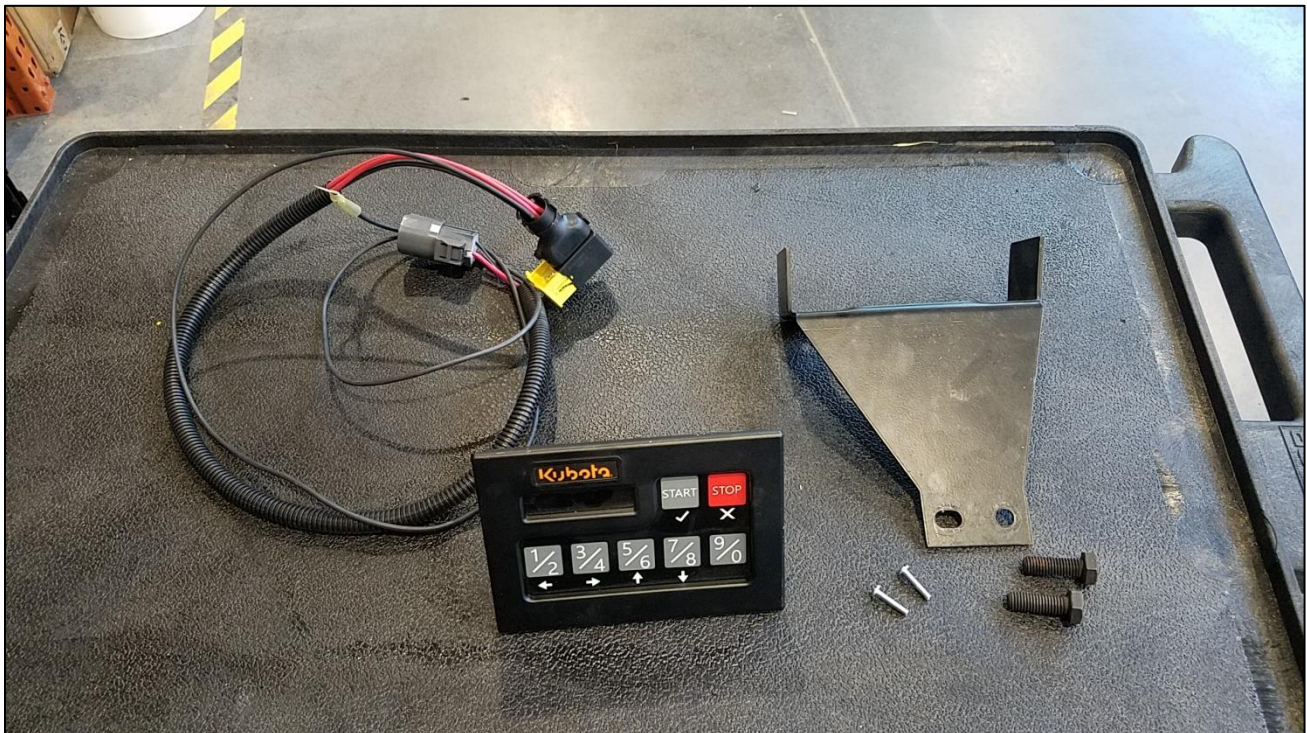


- Shut off machine and disconnect negative (-) terminal before working on the electrical circuit.
- Do not short circuit the battery, starter motor or electrical circuits.

Estimated assembly time: 30 min

■ CHECKING PARTS

[For Excavator Keyless Start System]



NOTE:

- Check the contents as shown in the parts list

■ PARTS LIST

Ref. No.	Part No.	Part Name	Q'TY	REMARKS
1	77700-10659	Excavator 1 Keyless Start Keypad Kit	1	
2		Excavator 1 Bracket	1	NSS
3		Excavator 1 Wire Harness	1	NSS
4		M8 Bolt	2	
5		Allen bolt, split washer	2	

NSS: Not sold separately

IMPORTANT: Keep all decals clean and legible. Replace all missing, illegible, or damaged decals.

■ MACHINE PREPARATION

⚠ WARNING

To avoid personal injury or death:

- Park the machine on a firm and level surface.
- Lower blade and attachments to the ground.
- Apply the parking brake if applicable.
- Stop the engine and remove the key from the machine.
- Disconnect negative (-) terminal on battery before performing work.

■ ASSEMBLY PROCEDURE

⚠ WARNING

To avoid personal injury or death:

- Disconnect the negative terminal from the battery before working on the electrical circuit.
- Do not short circuit the battery, starter motor or electrical circuits.

NOTE:

- **All assembly procedures listed within this manual are generally representative of the machine model for which the manual is written.** Your machine may be configured differently, but the outline for the procedure should still be followed. For further support for any issues not covered within the pages of this manual, please contact your local Kubota representative.
1. Connect Excavator 1 Wire harness to connector in back of keypad. Ensure that the connector is firmly connected and locked. (Figure 1)
 2. Lay keypad into Excavator 1 bracket. Align holes in back of bracket with threaded holes in keypad housing. See figure 2 for orientation.



Figure 1.

3. Secure keypad into Excavator 1 bracket using (2) Allen headed bolts with lock washers. Allen headed bolts thread directly into keypad housing (Figure 2)



Figure 2.

4. Locate threaded holes in lower RH side of cab console to the right of cup holder. (Figure 3)



Figure 3.

5. Align lower holes of Excavator 1 bracket with threaded holes in figure 3. Fasten excavator 1 wire harness ground wire (black) to one of these points with M8 bolt and ring terminal. Tighten both bolts.
6. Route gray connector of Excavator 1 wire harness through lower gap in machine console. (Figure 4)



Figure 4.

7. Remove small "L" shaped panel on console by removing plastic Phillip's head push rivets. (Figure 5)

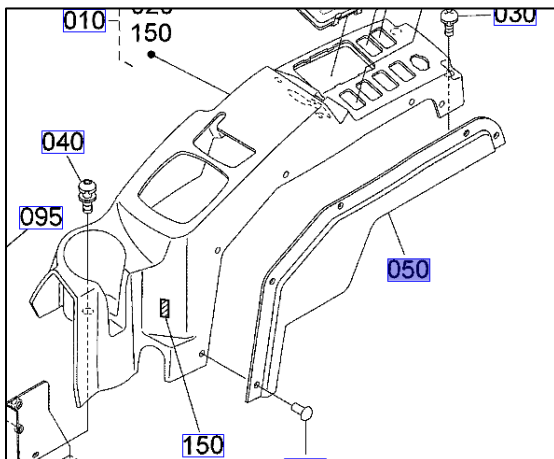


Figure 5.

8. Disconnect gray key switch connector. Connect Excavator 1 wire harness connector to machine key switch harness. (Figure 6)



Figure 6.

9. Remove standard key switch (optional) by fully removing switch panel and removing small Phillip's head screw holding key switch.
10. Replace all panels and connect machine battery ground terminal.
11. Press "Start" on keypad to ensure keypad functions. If keypad does not power on check all connections.